

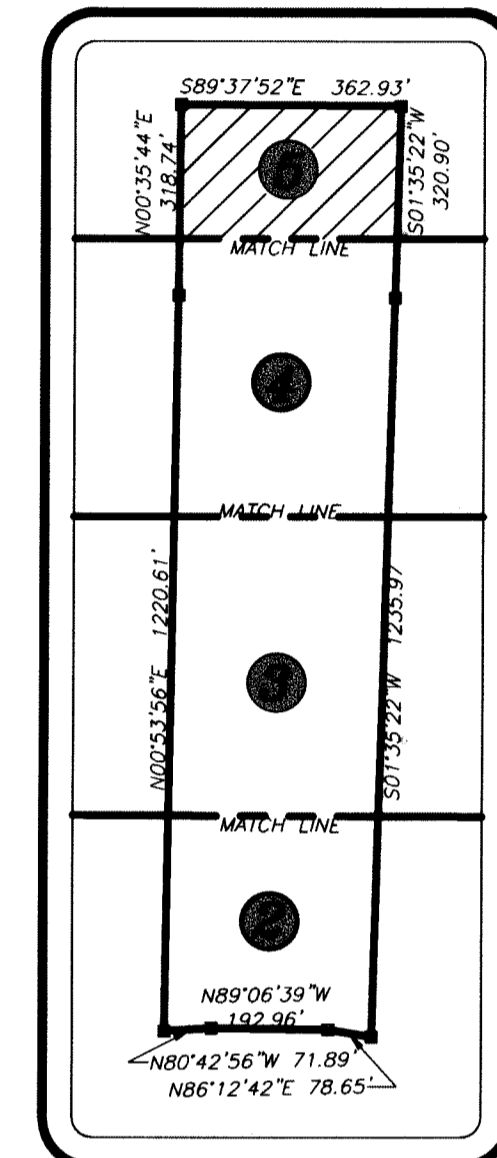
TREVI ISLE

LOCATED IN SECTIONS 27 AND 34, TOWNSHIP 41 SOUTH, RANGE 42 EAST
CITY OF PALM BEACH GARDENS, PALM BEACH COUNTY, FLORIDA.
JANUARY 2018

92

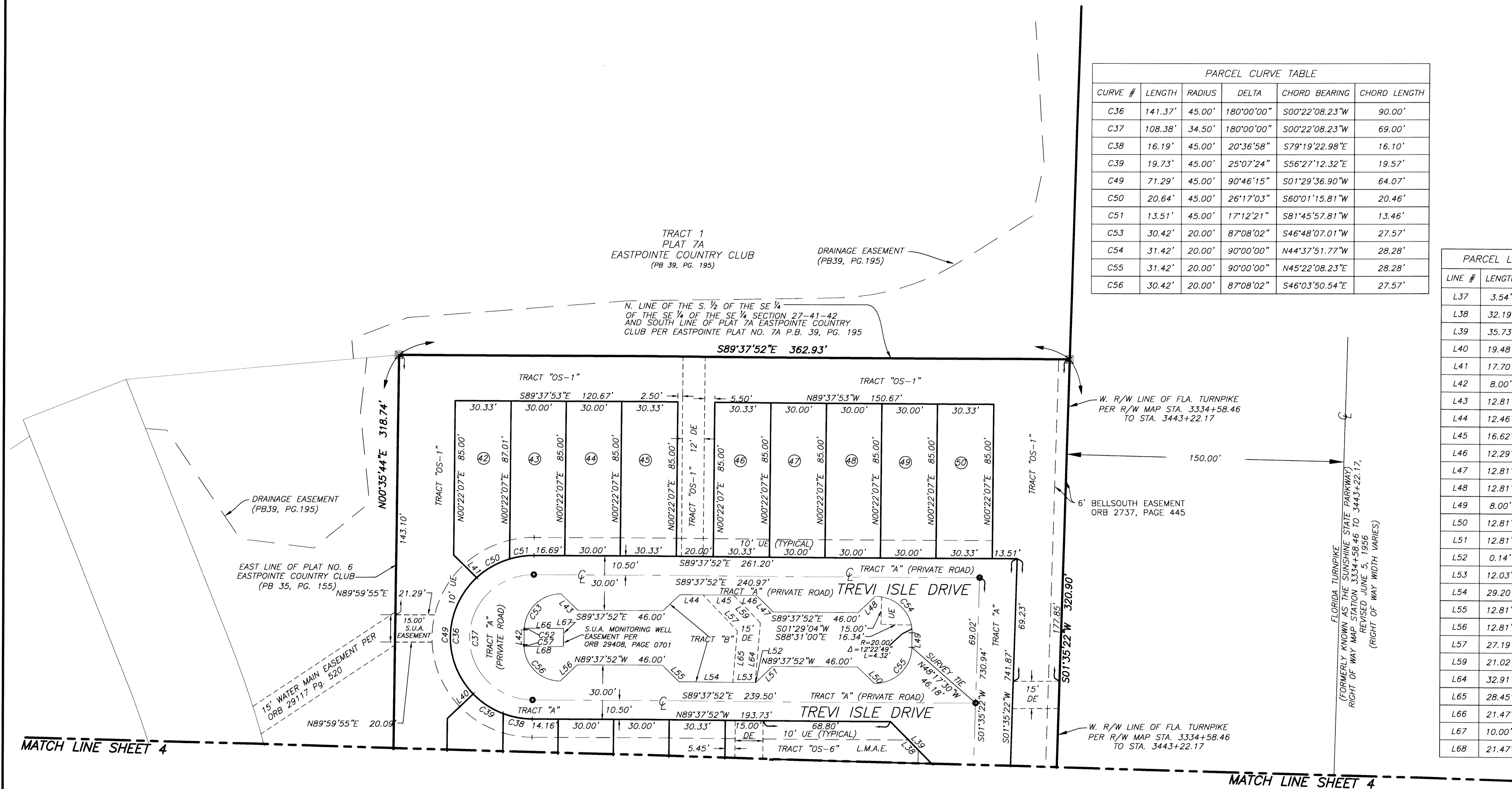
State of Florida
County of Palm Beach
THIS PLAT HAS BEEN FILED FOR RECORD AT _____
THIS _____ DAY OF _____
A.D. 2018 AND DULY RECORDED
IN PLAT BOOK _____ THROUGH _____
ON _____
PAGES _____ THROUGH _____
SHARON R. BOCK
CLERK AND COMPTROLLER
BY: _____
DEPUTY CLERK

SHEET 5 OF 6 SHEETS

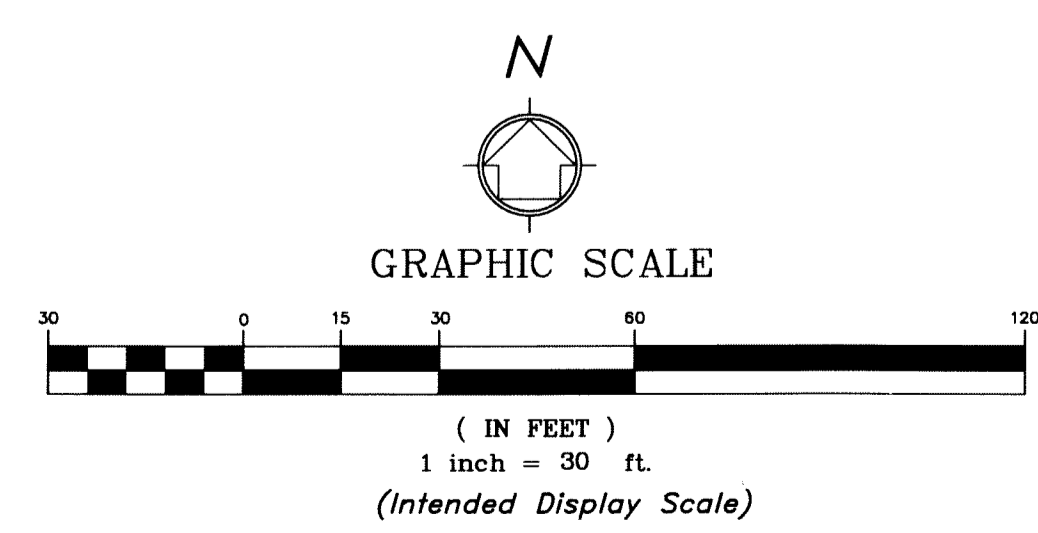


PARCEL CURVE TABLE					
CURVE #	LENGTH	RADIUS	DELTA	CHORD BEARING	CHORD LENGTH
C36	141.37'	45.00'	180°00'00"	S00°22'08.23"W	90.00'
C37	108.38'	34.50'	180°00'00"	S00°22'08.23"W	69.00'
C38	16.19'	45.00'	20°36'58"	S79°19'22.98"E	16.10'
C39	19.73'	45.00'	25°07'24"	S56°27'12.32"E	19.57'
C49	71.29'	45.00'	90°46'15"	S01°29'36.90"W	64.07'
C50	20.64'	45.00'	26°17'03"	S60°01'15.81"W	20.46'
C51	13.51'	45.00'	17°12'21"	S81°45'57.81"W	13.46'
C54	30.42'	20.00'	87°08'02"	S46°48'07.01"W	27.57'
C54	31.42'	20.00'	90°00'00"	N44°37'51.77"W	28.28'
C55	31.42'	20.00'	90°00'00"	N45°22'08.23"E	28.28'
C56	30.42'	20.00'	87°08'02"	S46°03'50.54"E	27.57'

PARCEL LINE TABLE		
LINE #	LENGTH	DIRECTION
L37	3.54'	N44°01'15"W
L38	32.19'	N44°01'15"W
L39	35.73'	N44°01'15"W
L40	19.48'	S46°06'30"W
L41	17.70'	S45°22'13"E
L42	8.00'	N0°22'08"E
L43	12.81'	S45°00'00"E
L44	12.46'	N89°37'52"W
L45	16.62'	N89°37'52"W
L46	12.29'	N89°37'52"W
L47	12.81'	S45°00'00"E
L48	12.81'	N45°44'16"E
L49	8.00'	S0°22'08"W
L50	12.81'	N45°00'00"W
L51	12.81'	S45°44'16"W
L52	0.14'	N89°37'52"W
L53	12.03'	N89°37'52"W
L54	29.20'	N89°37'52"W
L55	12.81'	N45°00'00"W
L56	12.81'	S45°44'16"W
L57	27.19'	S43°24'40"E
L59	21.02'	S43°24'40"E
L64	32.91'	S4°32'18"W
L65	28.45'	S4°32'18"W
L66	21.47'	S89°37'52"E
L67	10.00'	S0°22'08"W
L68	21.47'	N89°37'52"W



- LEGEND:**
- ⊙ = PERMANENT CONTROL POINT
 - ⊠ = 4"x4"x30" CONC. MON. W/ALUM. DISK STAMPED "P.R.M. LB 7055" UNLESS OTHERWISE NOTED
 - PB = PLAT BOOK
 - R = RADIUS
 - UE = UTILITY EASEMENT
 - L = LENGTH OF ARC
 - LB = LICENSED SURVEYING BUSINESS
 - Δ = DELTA (CENTRAL ANGLE)
 - DE = DRAINAGE EASEMENT
 - FP&L = Florida Power & Light
 - C.C.R. = CERTIFIED CORNER RECORD
 - CONC. = CONCRETE
 - FND. = FOUND
 - ORB = OFFICIAL RECORDS BOOK
 - R/W = RIGHT-OF-WAY
 - Pg. = PAGE
 - PBCR = PALM BEACH COUNTY RECORDS
 - w/ = WITH
 - PLS = PROFESSIONAL LAND SURVEYOR
 - PRM = PERMANENT REFERENCE MONUMENT
 - PSM = PROFESSIONAL SURVEYOR & MAPPER
 - S.U.A. = SEACOAST UTILITY AUTHORITY
 - (N/R) = NON-RADIAL POINT OF TANGENCY
 - (R) = RADIAL POINT OF TANGENCY
 - (P) = PERPENDICULAR
 - Ⓞ = LOT NUMBER INSIDE OF CIRCLE
 - MON. = MONUMENT
 - COR. = CORNER
 - DB = DEED BOOK
 - L.A.E. = LIMITED ACCESS EASEMENT
 - MEAS. = MEASURED
 - P.O.B. = POINT OF BEGINNING
 - P.O.C. = POINT OF COMMENCEMENT
 - PBCO. = PALM BEACH COUNTY
 - RNG. = RANGE
 - SEC. = SECTION
 - TWP. = TOWNSHIP



NOTICE: This plat, as recorded in its graphic form, is the official depiction of the subdivided lands described herein and will in no circumstances be supplanted in authority by any other graphic or digital form of the plat. There may be additional restrictions that are not recorded on this plat that may be found in the Public Records of Palm Beach County.

WGI
Wantman Group, Inc.

Engineering ♦ Planning ♦ Surveying ♦ Environmental
2035 VISTA PARKWAY, SUITE 100, WEST PALM BEACH, FL 33411
(866) 909-2220 phone (561) 687-1110 fax
CERTIFICATE OF AUTHORIZATION No. LB 7055
ORLANDO - PORT ST. LUCIE - TAMPA
THIS INSTRUMENT WAS PREPARED BY KEVIN RANDOLPH, P.S.M.
PROFESSIONAL SURVEYOR AND MAPPER, LICENSE NO. 7128
FOR THE FIRM: WANTMAN GROUP, INC.